

UNIVERSITÉ
TOULOUSE
CAPITOLE



EUROPEAN
SCHOOL OF LAW
TOULOUSE



Welcome to the
**European School of Law
Toulouse**



ÉCOLE de DROIT
de TOULOUSE



Welcome !

Dear Student,

I am delighted to extend **my warmest congratulations** on your admission to the European School of Law – Toulouse!

We are delighted that you will be joining us. You are about to become part of a **vibrant, international community of legal thinkers, researchers, and future legal leaders.**

The European School of Law - Toulouse offers an academic programme that combines the best aspects of both a school and a university. Our students are **carefully selected** and share a global vision and a passion for languages.

They get to know each other, collaborate, and thrive in a **close-knit environment** with privileged access to faculty members. Students from the ESL also become part of **a cosmopolitan network of students, alumni, and professional partners.**

Furthermore, they benefit from being part of a large institution, the internationally recognised University Toulouse Capitole, which is renowned for its exceptionally **rich student life.**

Whether you come from near or far, you will bring your unique ideas, experiences, and vision, and we look forward to seeing you grow and contribute during your time with us.

Once again, welcome ! **We are honoured to have you with us** and we look forward to supporting you on this important step in your academic and professional journey.

Sincerely,

Zoé Jacquemin

Directrice de la European School of Law - Toulouse



Summary

◆ **European School of Law - Toulouse**

The school.....	5
SAB and patron.....	6
Events.....	7
Opportunities.....	8
The ESL team.....	9
Academic calendar.....	10

◆ **Toulouse Capitole University**

The University.....	12
CVEC.....	13
University Services	14
Toulouse.....	15
Move around.....	16

◆ **Arriving in Toulouse**

Toul'box	18
France	19

◆ **Student life**

Student associations	21
Scholarship students	23
Campus map.....	24



European School of Law Toulouse



The school

The European School of Law (ESL) in Toulouse embodies **academic excellence** and international openness in the field of law. Located in the heart of the “Pink City,” this institution trains **legal professionals** and **lawyers** who are prepared to meet the **challenges of European and international law**. The education it provides is renowned for its **rigor** and **innovative approach**, in line with today’s legal challenges.



✓ **Practical skills**

✓ **Diverse careers**

✓ **World-renowned experts and professors**

✓ **Strategic Advisory Board (SAB)**

✓ **691** registered students

✓ **165** mobile students

✓ **18** double degrees

✓ **17** international universities

Former ESL patrons



Síofra O'leary

2025-2026



Elisabeth Tichy-Fisslberger

2024-2025



Alain Lamassoure

2023-2024



Michel Barnier

2016-2017



Vassilios Skouris

2015-2016



Strategic Advisory Board

The European School of Law has the privilege of benefiting from a **Strategic Advisory Board** composed of **prominent figures from the legal world**. Its members, who have outstanding experience, have held **high-level positions within prestigious public and private institutions** (such as the European Union, the French Council of State, White & Case law firm, and others).

The Board's mission is to support the school's leadership by **providing guidance on strategic decisions and educational directions** to pursue. Thanks to their expertise, its members offer a global and forward-looking perspective on contemporary legal issues, thereby helping to ensure the academic excellence and international relevance of the programs offered.



Nicolas Guillou

Patron of the class 2026-2027

Nicolas Guillou is a **French judge at the International Criminal Court**. A graduate of the French National School for the Judiciary, he has notably served as **a judge at the Kosovo Specialist Chambers, Chief of Staff at the Special Tribunal for Lebanon (2015–2019), and liaison magistrate in the United States (2012–2015)**.

In August 2025, following the approval of an arrest warrant targeting Israeli Prime Minister Benjamin Netanyahu, he was **placed under sanctions by the U.S. Department of the Treasury**.



Events

Life at the ESL is vibrant and full of opportunities.

You can get a glimpse of it by browsing through the monthly newsletters, which **immerse you in the heart of the school's life !**

- ✔ Educational outings and activities
- ✔ Trips and presentations by the administration and teaching staff
- ✔ Awards and honors
- ✔ Conferences and networking events
- ✔ Highlights in pictures

These newsletters are a chance to **celebrate successes, showcase projects, and share in the energy and dynamism of ESL together !**



Opportunities

Vis Moot, Moot Court Competition

This world-renowned event is one of the most important and prestigious competitions in the international legal world. It offers you a unique opportunity to plead before experts, refine their skills, and build an international network.



European Defense Challenge

The European Defense Challenge is a competition designed to attract young talent to the defense industry.



ESL Legal Lab

The ESL Legal Lab stands as a cornerstone of this professional approach. It gives students the opportunity to work hands-on with distinguished partner companies, tackling real-world legal challenges. By engaging in these practical projects, students not only develop valuable professional skills but also gain a deeper understanding of the lawyer's role within a real business environment.

Study Tour

Master 1 students have the opportunity to take part in a particularly enriching study tour.

Organized entirely by the MINTEC student association, the trip takes place in strategic capitals such as Paris and Brussels. The aim of this tailor-made program is to offer students a hands-on immersion in the practice of their future profession.

Not only does it enable them to discover the inner workings of major European institutions, it also opens the doors to high-level jurisdictions and prestigious players in the world of law.



The ESL team



A dedicated administrative team at your service :

- ◆ Camille WOLFF - Secretary General
- ◆ Christophe ERTA - Head of Academic Programs and Deputy to the Secretary General
- ◆ Maxime VAN HYFTE - Mobility Officer
- ◆ Archontissa ANTONAKAKI - Master's Program Academic Affairs Coordinator
- ◆ Valentine ROZE - Communications and European Projects Officer
- ◆ Amande FELICI - Administrative Officer

The administrative team is here to **provide information** and **support** throughout your **program**, with **questions related to international mobility, administrative procedures, and organizing your studies.**

Our goal: to **guide you with kindness** and **efficiency** so you can **fully focus on your success.**



Discover the whole team !

- ◆ Strategic Advisory Board
- ◆ Management and administrative team
- ◆ Teaching team



Academic calendar

Month	Week starting on...	MASTER 1	MASTER 2
September	01/09/26		
	07/09/26	1	WELCOME WEEK + Intensive French Classes
	14/09/26	2	WELCOME WEEK + Intensive French Classes
	21/09/26	3	3
October	28/09/26	4	4
	05/10/26	5	5
	12/10/26	6	6
	19/10/26	7	7
November	26/10/26	8	8
	02/11/26	9	9
	09/11/26	10	10
	16/11/26	11	11
	23/11/26	12	12
December	30/11/26	REVISION WEEK	
	07/12/26	EXAMS	
	14/12/26	EXAMS	
	21/12/26	SCHOOL HOLIDAYS	
January	28/12/26	SCHOOL HOLIDAYS	
	04/01/27	1	16
	11/01/27	2	17
	18/01/27	3	18
	25/01/27	4	EXAMS + LEGAL LAB DEFENSE
February	01/02/27	5	<p style="text-align: center;"> INTERNSHIP (3 to 6 months, internship report) or MASTER'S THESIS (defense in June/July, make-up session between September 1 and 15) </p>
	08/02/27	6	
	15/02/27	SCHOOL HOLIDAYS	
	22/02/27	7	
March	01/03/27	8	
	08/03/27	9	
	15/03/27	10	
	22/03/27	11	
April	29/03/27	12	
	05/04/27	SCHOOL HOLIDAYS	
	12/04/27	13	
	19/04/27	REVISION WEEK	
May	26/04/27	EXAMS	
	03/05/27	EXAMS	



Toulouse Capitole University



The University

Just steps from the Garonne River and right in the heart of Toulouse, the **University of Toulouse Capitole** stands as a **center of academic excellence**.

Within the University, the **École de droit** offers a **privileged setting for pursuing law studies**.

4 sites

740 administrative staff

150 million euros annual budget

140 student associations

36 sports activities

750 teachers researchers



Studying at Toulouse Capitole means choosing **excellence** in a **vibrant environment** that combines **tradition** and **innovation, academic rigor,** and an unparalleled **quality of life**.

Law

Economy

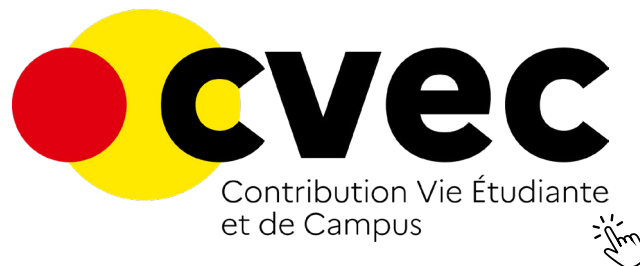
Management

Political science



CVEC

The CVEC, or Student and Campus Contribution, is a **mandatory fee of 105€ per year for all students enrolled in an initial program at a higher education institution**, with some exceptions. Once paid, **the receipt serves as proof of payment and is required to finalize your enrollment at the institution.**



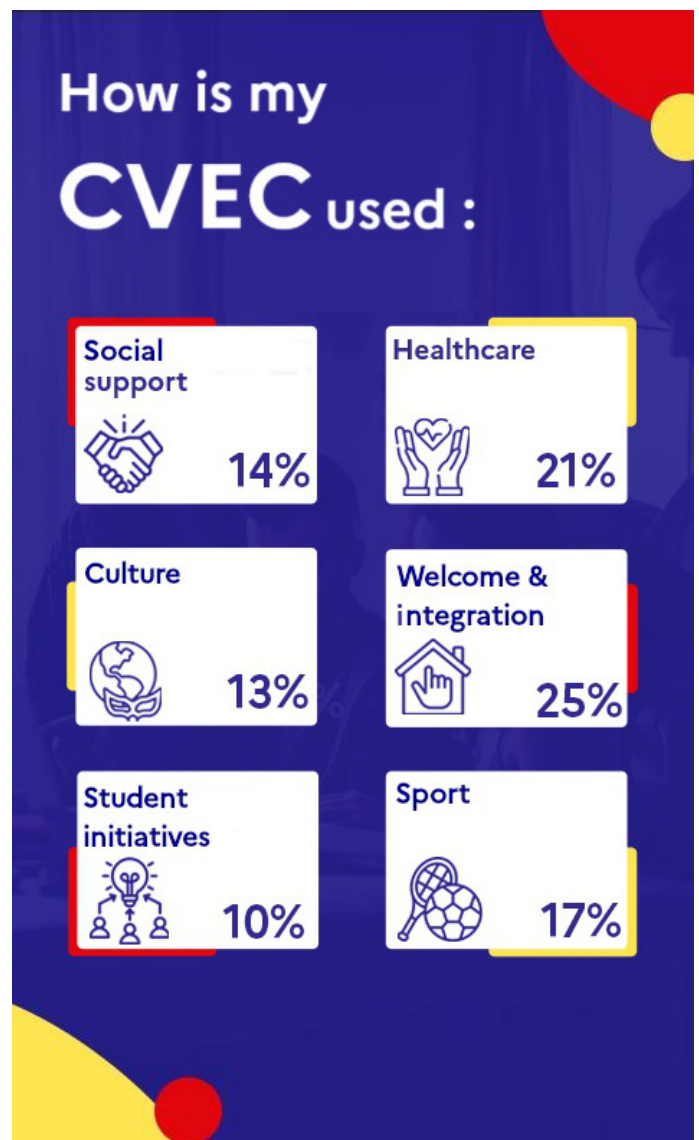
The CVEC, what is it ?

Every student in initial training in a higher education institution must obtain, prior to registration, a certificate of payment or exemption from payment of the Student Life and Campus Contribution (CVEC).

Questions ?

You can find some answers using the link down below :

<https://www.etudiant.gouv.fr/fr/faq-cvec-2402>



University services

On the University of Toulouse Capitole campus, students benefit from comprehensive support that goes far beyond academics. All services are designed to promote their health, well-being, guidance, and career development.

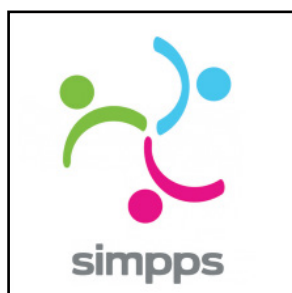
▼ SCREI

Office of European and International relations

welcome-UT1@ut-capitole.fr
05 61 63 35 45

▼ SIMPSS

Health needs are met by a preventive medicine service, which offers **free medical consultations, psychological support, and awareness campaigns.**



▼ SUAPS

Sports are also at the heart of student life: team sports, dance, martial arts, aquatic activities, and fitness. The university has a weight room, a climbing wall and a large gymnasium.



▼ SOIP

A **career guidance** and **professional integration service** is available to students throughout their studies, providing advice and support as they build their personal and professional projects.



▼ CROUS

For dining, several **CROUS cafeterias and social spaces** are located throughout the campus.

The university also assists students in **finding housing**, working in partnership with **CROUS** and other local organizations to help them **settle in Toulouse.**



Toulouse

Toulouse is a city where life is good, offering :

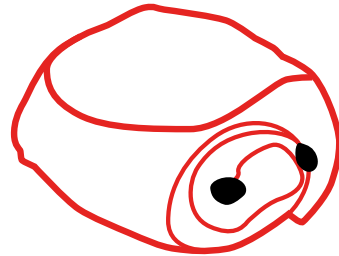
- ◆ A young and vibrant atmosphere
- ◆ A moderate cost of living
- ◆ Around a hundred festivals each year, thanks to its UNESCO “City of Music” designation received in 2023
- ◆ Internationally renowned landmarks
- ◆ Museums and exhibition spaces
- ◆ Movie theaters, libraries, cafés, restaurants, bars, and more



1st trendy city
worldwide

1st French^{*}
student city

4th France's
metropolis



«here we say
chocolatine»



* According to l'Étudiant



Move around

Public transportation in Toulouse is highly developed. The city features **two metro lines**, A and B, which provide **quick and easy access across Toulouse**.

The **bus network** is also extensive, with around **100 routes** serving the city and surrounding metropolitan area.



Week-end getaway

Whether you're planning a weekend getaway or a longer trip, Toulouse offers several transportation options :

Toulouse Matabiau Train Station :

This major station connects to cities throughout **France and abroad**.

You can take **regional TER trains**, **long-distance trains**, or even **buses** to destinations like Spain, Italy, or Paris.



Toulouse Blagnac International Airport:

The airport provides easy access to **destinations worldwide** (Canada, United States, Italy, etc.) and can be reached in **about 30 minutes** via direct tram or bus service



Arriving in Toulouse



Toul'box

For over 10 years, the Toul'Box service by the COMUE of Toulouse **has helped international students, PhD candidates, and researchers** settle in Toulouse and the region.

Through its digital platform, Toul'Box offers **customizable support**: administrative help, housing assistance, bank account setup, transport tickets, language support, and more.

The «essential» pack with the «finding and booking accomodation» option are **included in your registration fees!** You can subscribe to other Toul'box services, but this will be at your own expense.

Be careful: the accomodation service is only open to incoming foreign students who have not been living in France for the last 2 years.



Communauté
d'universités
et établissements
de Toulouse



Student and doctoral student offers

"Essentiel" pack

	Included	Optional
Personalized appointment	✓	
Opening of a bank account	✓	
Public transport card (Pastel)	✓	
Station/airport taxi in sedan/van		+ 33 € / 60 €
Guided tour		+ 15 €
Phoning - SIM card(s)		+ 15 €*
Finding and booking accommodation	✓	

* Per extra SIM card unit



France

Even though **Toul'box** mostly takes care of your **administrative procedures**, here are **some essential ones** that you may have to **complete** with or without them.

Find accomodation

The "Toul'box" we mentioned earlier will help you find accommodation, but there are **many other services available**. Here is a non-exhaustive list :

- Yellome



- Cité Internationale



- Oh ! Mon appart' étudiant



- Colocatère



- Altéal



- Welcome Desk



- Hostels Toulouse Wilson



- La petite auberge de Saint Sernin



VISA

When you arrive in France, you **must validate your residence permit within the first few days**.

You will need an **email address**, your **arrival date**, your **mailing address**, your **visa**, and a **payment card** to **pay the residence permit issuance tax**.

<https://administration-etrangers-en-france.interieur.gouv.fr/particuliers/#/>

Health

In France, we have a **social security system**.

For **EU students**, you have a **European card**, so you don't need to register. You can use this card to receive healthcare in France.

For **non-EU** nationals, you must **register with the social security system to receive healthcare in France**. You can register directly online :

<https://etudiant-etranger.ameli.fr/>

It's **free** and **mandatory**. If you have a long-stay visa, you will be issued a **carte vitale**, which will allow you to **get reimbursed for your healthcare costs**.



Student life



Student associations



UTC VIS MOOT TEAM

Official Account for the Willem C. Vis International Commercial Arbitration Moot Toulouse Capitole University, European School of Law Team.



AEGEE Toulouse

AEGEE Toulouse is a European association that supports international students in Toulouse through projects focusing on mobility, education, skills, tourism and employment.



TESLA

Promote the European School of Law's degrees, bring together students from the same degrees around common projects and organize events of interest to them.



ALUMNI

The European School of Law Alumni Association brings together all former ESL students.



MINTEC Association

Official Account for the Master in International Economic Law association.



Congratulations!

Welcome to this LL.M. — where borders become bridges, and diversity becomes strength.

On behalf of the CIEL - CBD & IEL Association (Previously known as «MINTEC Association»), it is **a true pleasure to welcome you** to the Master's programs in International Economic Law and Cross-Border Disputes.

Congratulations on **joining a dynamic, international, and intellectually challenging community** that brings together students from different legal systems, cultures, and professional backgrounds.

Through the association, you will have the opportunity to actively engage in the life of the program, meet fellow students, alumni, and legal professionals, and take part in projects that strengthen both your academic profile and your professional skills.

We organize **conferences, workshops, debates, networking events, and social activities** designed to help you integrate, grow, and make the most of your time here.

Whether you are new to the university, new to the country, or simply starting a new chapter, **this association is here to help you find your place**, build meaningful connections, and contribute to a strong and welcoming community.

We encourage you to participate, share your ideas, and shape the future of our Master together with us.

Your journey starts here and the possibilities are truly beyond the sky.

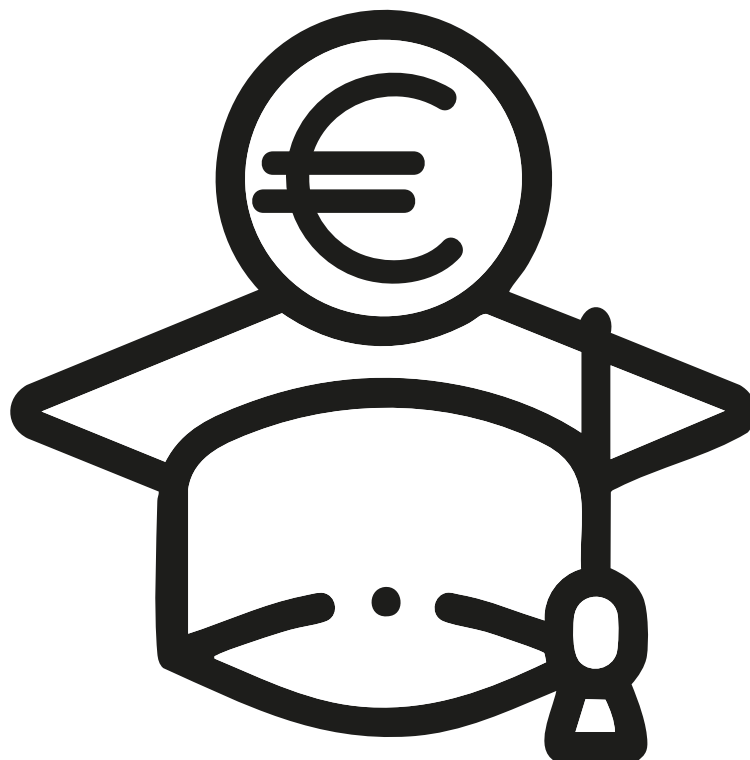
Ibrahim Najemeddine
President, CIEL CBD & IEL Association



The ESL excellence scholarships

The European School of Law awards **two scholarships each year to outstanding first-year students in the International Economic Law and Cross-border Disputes Master's program** who are admitted to continue in the second year in Toulouse. Each scholarship **fully covers the registration fees for the academic year** (€4,500 per student).

Selection is based on **academic excellence** (with special attention to the first year), the **coherence of the study programme** with **previous experience** and **career plans**, and the quality of **extracurricular activities**.



Scholarship winners 2025

Before joining the program, I felt a bit uncertain and overwhelmed. But after completing my first year, I can confidently say that I am **extremely grateful and proud** to be part of the European School of Law. The program can be challenging, and while it can feel tough at times, it **has helped me grow** tremendously, both academically and personally. Receiving a scholarship this year was a great motivation and a reminder of the opportunities here.

Living in Toulouse has been an incredible experience. I have met some **wonderful people** and made great friends, and I am really grateful for all the connections I have built here.

The city is student-friendly, full of life, and the people are warm and kind. Joining the ESL and moving here has been more enriching than I expected. This year taught me to stay open, trust the process, and **embrace new experiences** even when they feel challenging.

As you begin this journey, I encourage you to step out of your comfort zone, build meaningful connections, and welcome the opportunities ahead.

I am excited for what is next and hope your experience here is as rewarding as mine.

Bienvenue à Toulouse!

Karen SAFA
Master's in Cross-border Disputes



Campus map



TOULOUSE CAMPUS - THREE SITES

GENERAL LEGEND, CODES AND ABBREVIATIONS

LOCATION OF PREMISES

> The letters indicate the building on the campus:

AF	Anciennes Facultés
AR	Arsenal Building
J	Building J of Arsenal building
[AN]	North Wing of Arsenal building
[AS]	South Wing of Arsenal building
BU	Universitary Library
M	Manufacture des Tabacs, deuxième lettre matching to the building (MB, MC, MD...)
PC	University rooms in the Puits Creusés building at the Anciennes Facultés
R	Rempart building
T	The rooms named TJ are under the ground floor

> The first digit indicates the level:

- The numbering in the corridors is divided into even and odd sides.
- 0 and/or ten for the ground floor
- Hundreds for floors: 1xx, 2xx or 3xx, etc.
- Negative for basements: -1xx, -2xx, etc.

> Landmarks on the map

Some premises are identified by a letter or number shown directly on the plan. Examples: [A], [7].

> Colors codes

When their distinction on the plan is possible, 4 colors are assigned to the types of premises:

- Reception, administration/students services
- Librairies
- Formation Spaces, composantes
- Living places and associations

- Principal entrance
- PMR Access
- Reception
- Toilets acces. PMR
- Elevator
- Library
- Cafeteria



See you in september !



Partners

WHITE & CASE

 **TELESPAZIO**
a LEONARDO and THALES company

MAISON DE L'
Europe
TOULOUSE OCCITANIE

ECIT
Foundation
European Citizens' rights, Involvement and Trust

 **Sabatellini & Associats**
Barcelona-Madrid

CASTALDI PARTNERS
1996


ENGAGE·EU
EUROPEAN UNIVERSITY

Service Civique Européen

AIRBUS

 **GOETHE INSTITUT**

cinespaña
Festival de cinéma espagnol et portugais

QUINZAINE FRANCO-ALLEMANDE D'OCCITANIE